

Speakeasy!
BOTANICAL LIP CARE

méwe
IL A MALÙ QUIRK LINE

méwe
IL A MALÙ QUIRK LINE

SPEAKEASY - BOTANICAL LIP CARE

Cocktail rigenerante in stick per placare la secchezza delle labbra.
Regenerating cocktail in stick to quench thirsty lips.

Attivo idratante "Upcycled Gin" in mix di burri, oli e cere naturali.
"Upcycled Gin" moisturizing active in a mix of natural butters, oils and waxes.

Tint & Care

INGREDIENTS: BEANUS COMMUNE SEED OIL, BEANUS COMMUNE (CASTORI SEED OIL), BUTYROSPERMIUM PARKII BUTTER, BUTYROSPERMIUM PARKII (SHEA) BUTTER, CARYOPHYLLIC TRIKETERPENE (SQUALENE), ROSMARINUS OFFICINALIS CERIFERA CERIFERA, CERA (COPERNICIA CERIFERA (CARNALUBA) WAX), CANDILLIA CERA (EUPHORBIA CERIFERA (CANDILLIA) WAX), TRIPENTHITETRAKOTERATE HELIANTHUS ANNUUS SEED EXTRACT, HELIANTHUS ANNUUS (SUNFLOWER SEED EXTRACT), SYNTHETIC FLUORHIOCARBONATO MICROEMULSIONE, OLIO DI BURROSA OIL (ANSOPHOBLES OIL), BURROSA OIL OIL, UNSAPONIFIABLE PERSEA GRATISSIMA OIL, PERSEA GRATISSIMA (AVOCADO OIL), HELIANTHUS ANNUUS SEED OIL, HELIANTHUS ANNUUS (SUNFLOWER SEED OIL), PARFUM (FRAGRANCE), RHUS VERNICIFLUA PEEL, CERA (RHUS VERNICIFLUA PEEL WAX), SHOREA ROBUSTA SEED OIL, SHEA WAX, CARYOPHYLLIC TRIKETERPENE, ACETATE ETHYLHEXYL PALMITATE, ROSMARINUS OFFICINALIS LEAF EXTRACT, ROSMARINUS OFFICINALIS (ROSEMARY) LEAF EXTRACT, ALUMINUM HYDROXIDE, SACCARINUM CALORICUM SEED FERMENT HYDRATE, GLYCERIN, ACIDE BARBADENSIS LEAF EXTRACT, TETRACYCLOSTYRENE SULFONIC ACID SODIUM SALT, TOCOPHEROL, MAY CONTAIN: 1-4-DI(2-ETHYLHEXYL) TITANIUM DIOXIDE, CI 59010 (RED 28 LAKE), CI 42090 (BLUE 1 LAKE).

96.28 % NATURAL ORIGIN RAW MATERIALS
VEGAN

4 g e
0.141 oz. 
MADE IN ITALY
distr. da CLIMBEAUTY
by ila malù

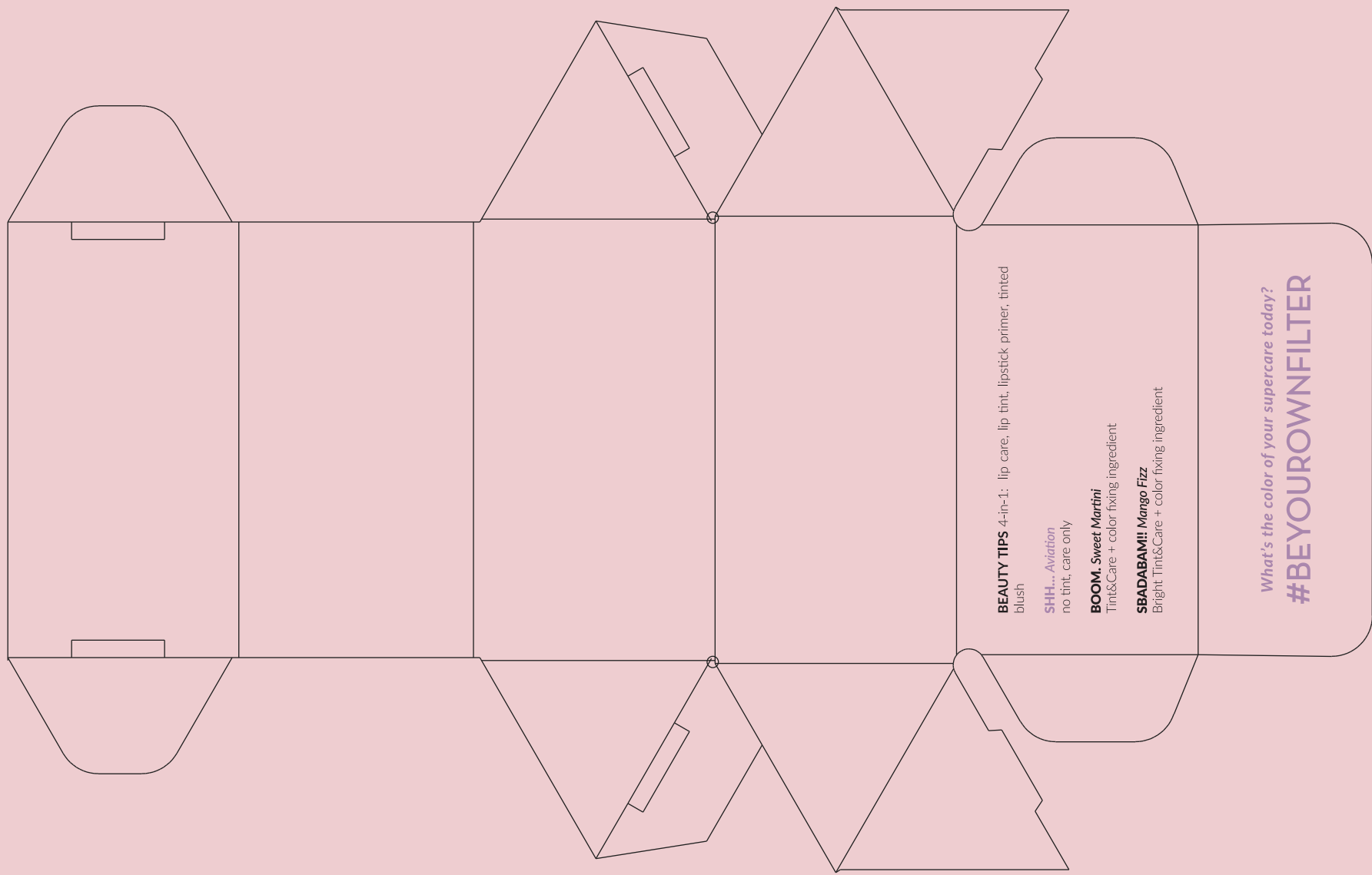
SHOPMEWE.IT



Speakeasy!
BOTANICAL LIP CARE
SHH - AVIATION

Una pausa, una fuga in un luogo sicuro e protetto. Una piccola trasgressione per prendersi cura di sé e rigenerarsi. **Speakeasy Botanical Lip Care** rappresenta tutto questo. L'attivo "Upcycled Gin" è il nostro segreto "quirk": un booster ad effetto idratante per labbra asciutte.

A break, an escape to a safe and secure place. A small transgression to take care of yourself and regenerate. **Speakeasy Botanical Lip Care** is all of this. The active ingredient "Upcycled Gin" is our "quirk" secret: a moisturizing booster for thirsty lips.



BEAUTY TIPS 4-in-1: lip care, lip tint, lipstick primer, tinted blush

SHH... *Aviation*
no tint, care only

BOOM. Sweet Martini

Tint&Care + color fixing ingredient

SBADABAM!! Mango Fizz

Bright Tint&Care + color fixing ingredient

What's the color of your supercare today?

#BEYOUROWNFILTER