

This multi-tasking powerhouse strengthens, softens & replenishes the thin, crepey skin on the hands through intense moisturization & diminishes the look of dark spots, veins & discoloration. This silky cream absorbs quickly & visibly firms, tightens & brightens while smoothing the look of fine lines & wrinkles & improving the skin's elasticity over time.

Ce soin puissant multifonctions renforce, adoucit et redensifie la peau fine et fripée des mains grâce à une hydratation intense et réduit l'apparence des taches pigmentaires, des veines et des dépigmentations. Cette crème soyeuse pénètre rapidement et raffermi, retend et éclaircit visiblement l'apparence des rides et des ridules et améliore l'élasticité avec le temps.

APPLICATION

Apply liberally, massaging into fingers & backs of hands. Use morning & evening, and throughout the day as desired.

Appliquer généreusement en massant sur les doigts et le dos des mains. Utiliser matin et soir, et tout au long de la journée si désiré.

INGREDIENTS

Water/Aqua/Eau, Hydroxyethyl Urea, Butyrospermum Parkii (Shea) Butter, Dicaprylyl Ether, Aluminum Starch Octenylsuccinate, Butylene Glycol, Ethylhexyl Palmitate, Stearic Acid, Cetearyl Alcohol, Dimethicone, Glycerol Stearate, Hydroxyphenoxy Propionic Acid, Palmitoyl Glycine, PEG-100 Stearate, Helianthus Annuus (Sunflower) Seed Oil, Phospholipids, Xanthan Gum, Ethylhexylglycerin, Tocopherol, Tetrasodium Glutamate Diacetate, Sodium Hydroxide, Sodium Acrylates Copolymer, Polysorbate 60, Hydrogenated Polydecane, Triethyl Citrate, Polyglyceryl-10 Stearate, Phenoxyethanol

Hand Treatment / Traitement pour les Mains / Eine Kur für die Hände / Trattamento Mani / Tratamiento Para Manos

INGRÉDIENTS CLÉS

Beurre de Karité: Nutrition et Hydratation Intenses Le beurre de karité, riche en vitamines A, E et F, favorise une peau d'apparence saine et une hydratation intense en apportant à la peau des acides gras essentiels et des nutriments pour une hydratation optimale. Extrait de la noix de l'arbre de karité originaire d'Afrique, le beurre de karité est aussi connu pour améliorer visiblement l'apparence des taches pigmentaires et des rides.

Phospholipides: Pénétration Améliorée & Réparation de la Barrière Essentielle pour la garder hydratée, les phospholipides sont naturellement présents dans la peau et aident à reconstruire la barrière cutanée en protégeant la peau des agressions environnementales asséchantes. Grâce à ses propriétés hydratantes et solubilisantes, les phospholipides aident à améliorer l'absorption d'ingrédients puissants dans la surface de la peau.

Glycine: Améliore la Rétention d'Hydratation et Réduit Visiblement les Rides Naturellement produite dans le corps, la glycine est un acide aminé non-essentielle qui améliore la rétention de l'hydratation et réduit l'apparence des rides et des ridules en ouvrant avec l'eau pour favoriser une peau d'apparence riche en collagène qui est visiblement plus lisse, plus ferme et en meilleure santé.

Cold Plasma Plus+ Hand Therapy

Promotes the most visible signs of youthful-looking hands
Favorise les signes les plus visibles pour des mains d'apparence plus jeunes

Perricone MD

Cold Plasma Plus+ Hand Therapy
Hand Treatment / Traitement pour les Mains

Shea Butter, Phospholipids, Glycine

e 59 mL / 2 fl oz

KEY INGREDIENTS

Shea Butter: Intense Moisturization & Hydration Rich in vitamins A, E & F, shea butter promotes healthy-looking skin & intense moisturization by providing the skin with essential fatty acids & nutrients for optimal hydration. Extracted from the nut of the shea tree native to Africa, shea butter is also known to visibly improve the appearance of dark spots & wrinkles.

Phospholipids: Enhanced Delivery & Barrier Repair Crucial for keeping the skin hydrated, phospholipids are naturally occurring & help replenish the skin's moisture barrier by protecting the skin from drying environmental aggressors. Due to its moisturizing & solubilizing properties, phospholipids help improve absorbability of potent ingredients into the skin's surface.

Glycine: Improves Moisture Retention & Visibly Reduces Wrinkles Naturally produced in the body, glycine is a non-essential amino acid that improves moisture retention & reduces the appearance of fine lines & wrinkles by working with water to promote the appearance of collagen-rich skin that is visibly smoother, firmer & healthier.

Dist. By: NV Perricone LLC, San Francisco, CA 94111. Made in USA of foreign and domestic components. / Fabriqué aux États-Unis avec des composants nationaux et étrangers. Dist. By: NV Perricone LLC, San Francisco, CA 94111. Made in USA of foreign and domestic components. / 1 888 825 7837 perriconemd.com

UPC: 651473709510



****Gloss & Matte Lamination in Hidden Layers****

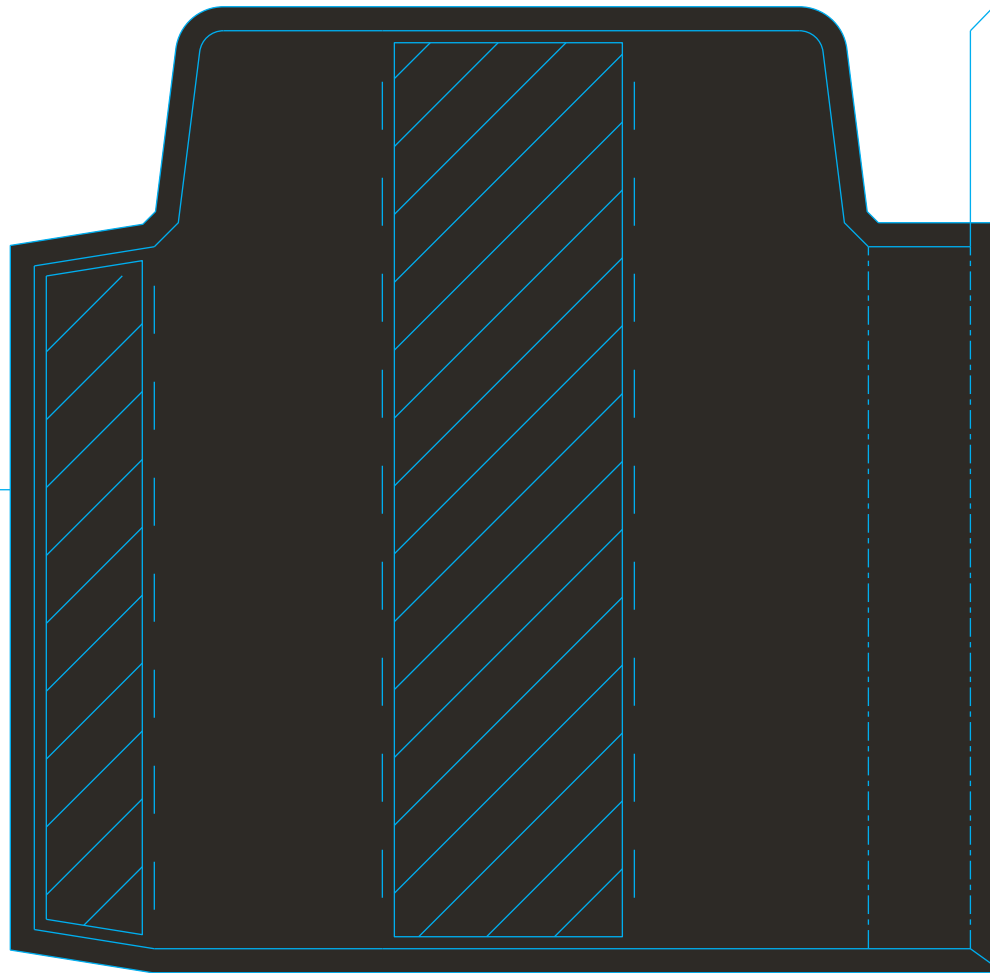
Perricone MD	
ARTWORK IS PROPERTY OF PERRICONE MD & MUST BE RETURNED TO: 600 MONTGOMERY ST. STE. 2500 • SAN FRANCISCO, CA 94111 • 201-232-6529	
PRODUCT LINE: Cold Plasma Plus+	START DATE: 05/29/19
PRODUCT: Cold Plasma Plus+ Hand Therapy 2oz FC	DUE DATE: 07/01/19
PART #: 651268	SHIP TO TRADE (STT): N/A
UPC: 651473709510	FORMAT SIZE: 8W1222C1a
SKU #: 63510001	SUBSTRATE: SBS Folding Carton
FILE NAME: 651268_CPPP_HandTherapy_2oz_Tube_FC_Lannister	

PRINTING INSTRUCTIONS & LAYERS:	
* DO NOT MATCH PRINTED MATERIAL TO THE COLORS OF THIS ELECTRONIC DOCUMENT. THEY ARE FOR LAYOUT PURPOSES ONLY.	
Custom Bone (Copy)	Custom Bone, similar to PMS 9043 C. Please use LAB values: L 87.81, A -0.76 / B 6.93
PMS Black C	100%: Exterior and Interior Flood 80%: Front Mortar & Pestle
Anti-Scuff Matte Lamination	
Spot Gloss	

INCI LISTING				
* INDICATE THE R&D NUMBER, BULK CODE % DESCRIPTION FOR THE PRODUCT OR MULTIPLE PRODUCTS.				
ENG/FORMULA #	MASS/BULK CODE	DESCRIPTION	WIP IRC #	WIP UPC #
N/A	N/A	Cold Plasma Plus+ Hand Therapy 2oz	N/A	N/A

HISTORY			
* CREATIVE PLEASE DATE, INITIAL AND DESCRIBE CHANGES TO THE MECHANICAL.			
DATE	INITIAL	REVISION #	DESCRIPTION
05/29/19	CNB	1	Mechanical created
06/11/19	CNB	2	Revisions per mark ups
06/14/19	CNB	3	Revisions per mark ups
06/24/19	CNB	4	Revisions per mark ups
06/27/19	CNB	5	Revisions per mark ups

FINAL APPROVED MECHANICAL AS OF 07.01.19



This multi-tasking powerhouse strengthens, softens & replenishes the thin, crepey skin on the hands through intense moisturization & diminishes the look of dark spots, veins & discoloration. This silky cream absorbs quickly & visibly firms, tightens & brightens while smoothing the look of fine lines & wrinkles & improving the skin's elasticity over time.

Ce soin puissant multifonctions renforce, adoucit et redensifie la peau fine et fripée des mains grâce à une hydratation intense et réduit l'apparence des taches pigmentaires, des veines et des dépigmentations. Cette crème soyeuse pénètre rapidement et raffermi, retend et éclaircit visiblement l'apparence des rides et des ridules et améliore l'élasticité avec le temps.

APPLICATION

Apply liberally, massaging into fingers & backs of hands. Use morning & evening, and throughout the day as desired.

Appliquer généreusement en massant sur les doigts et le dos des mains. Utiliser matin et soir, et tout au long de la journée si désiré.

INGREDIENTS

Water/Aqua/Eau, Hydroxyethyl Urea, Butyrospermum Parkii (Shea) Butter, Dicaprylyl Ether, Aluminum Starch Octenylsuccinate, Butylene Glycol, Ethylhexyl Palmitate, Stearic Acid, Cetearyl Alcohol, Dimethicone, Glyceryl Stearate, Hydroxyphenoxy Propionic Acid, Palmitoyl Glycine, PEG-100 Stearate, Helianthus Annuus (Sunflower) Seed Oil, Phospholipids, Xanthan Gum, Ethylhexylglycerin, Tocopherol, Tetrasodium Glutamate Diacetate, Sodium Hydroxide, Sodium Acrylates Copolymer, Polysorbate 60, Hydrogenated Polydecane, Triethyl Citrate, Polyglyceryl-10 Stearate, Phenoxyethanol

Hand Treatment / Traitement pour les Mains / Eine Kur für die Hände / Trattamento Mani / Tratamiento Para Manos

INGRÉDIENTS CLÉS

Beurre de Karité: Nutrition et Hydratation Intenses Le beurre de karité, riche en vitamines A, E et F, favorise une peau d'apparence saine et une hydratation intense en apportant à la peau des acides gras essentiels et des nutriments pour une hydratation optimale. Extrait de la noix de l'arbre de karité originaire d'Afrique, le beurre de karité est aussi connu pour améliorer visiblement l'apparence des taches pigmentaires et des rides.

Phospholipides: Pénétration Améliorée & Réparation de la Barrière Essentielle pour la garder hydratée, les phospholipides sont naturellement présents dans la peau et aident à reconstruire la barrière cutanée en protégeant la peau des agressions environnementales asséchantes. Grâce à ses propriétés hydratantes et solubilisantes, les phospholipides aident à améliorer l'absorption d'ingrédients puissants dans la surface de la peau.

Glycine: Améliore la Rétention d'Hydratation et Réduit Visiblement les Rides Naturellement produite dans le corps, la glycine est un acide aminé non-essentielle qui améliore la rétention de l'hydratation et réduit l'apparence des rides et des ridules en ouvrant avec l'eau pour favoriser une peau d'apparence riche en collagène qui est visiblement plus lisse, plus ferme et en meilleure santé.

Cold Plasma Plus+ Hand Therapy

Promotes the most visible signs of youthful-looking hands
Favorise les signes les plus visibles pour des mains d'apparence plus jeunes

Perricone MD



Shea Butter, Phospholipids, Glycine

e 59 mL / 2 fl oz

KEY INGREDIENTS

Shea Butter: Intense Moisturization & Hydration Rich in vitamins A, E & F, shea butter promotes healthy-looking skin & intense moisturization by providing the skin with essential fatty acids & nutrients for optimal hydration. Extracted from the nut of the shea tree native to Africa, shea butter is also known to visibly improve the appearance of dark spots & wrinkles.

Phospholipids: Enhanced Delivery & Barrier Repair Crucial for keeping the skin hydrated, phospholipids are naturally occurring & help replenish the skin's moisture barrier by protecting the skin from drying environmental aggressors. Due to its moisturizing & solubilizing properties, phospholipids help improve absorbability of potent ingredients into the skin's surface.

Glycine: Improves Moisture Retention & Visibly Reduces Wrinkles Naturally produced in the body, glycine is a non-essential amino acid that improves moisture retention & reduces the appearance of fine lines & wrinkles by working with water to promote the appearance of collagen-rich skin that is visibly smoother, firmer & healthier.

Dist. By: NV Perricone LLC, San Francisco, CA 94111. Made in USA of foreign and domestic components. / Fabriqué aux États-Unis avec des composants nationaux et étrangers. Dist. By: NV Perricone LLC, San Francisco, CA 94111. Made in USA of foreign and domestic components. / PerriconeMD.com

UPC: 651473709510



****Gloss & Matte Lamination in Hidden Layers****

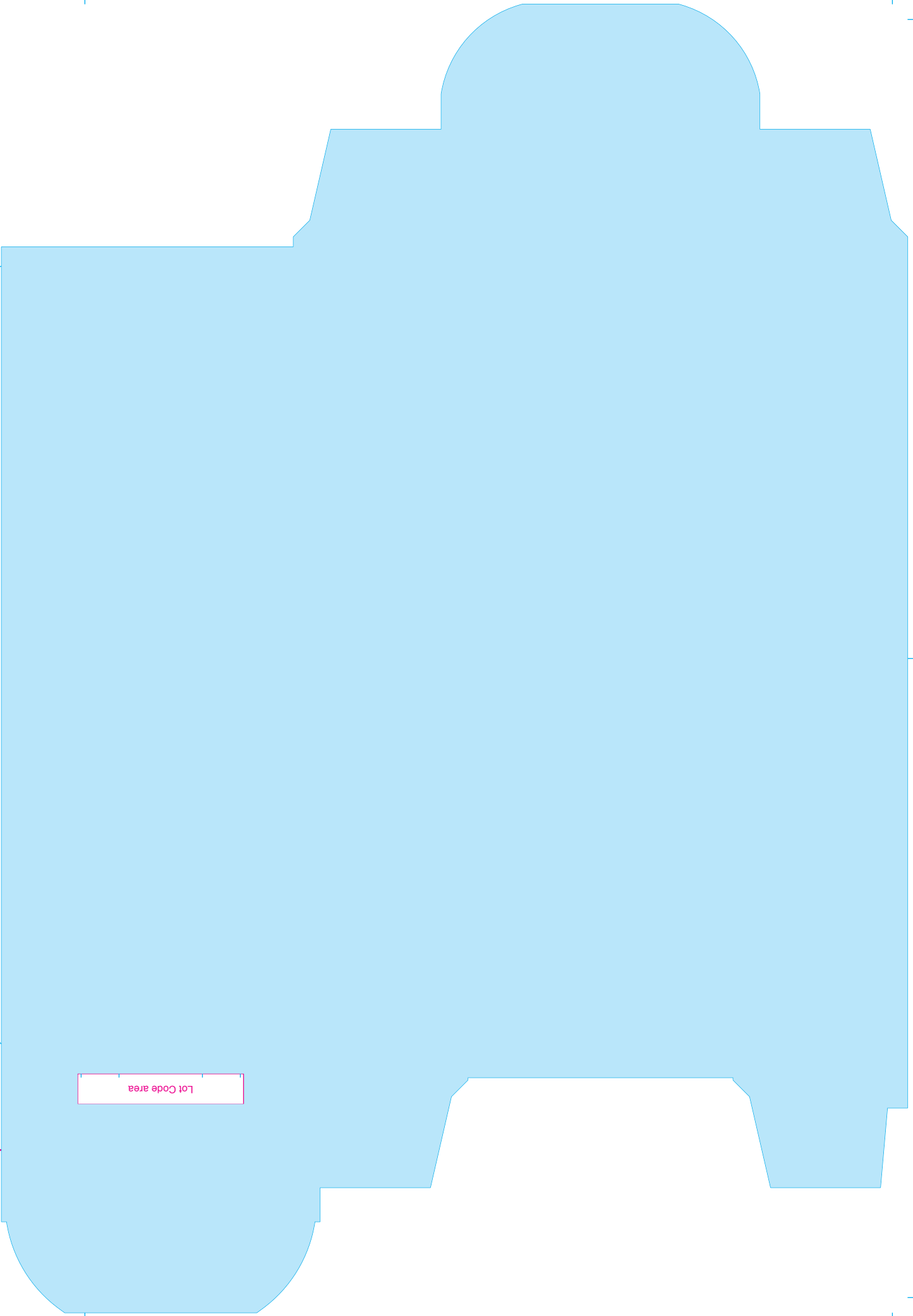
Perricone MD	
ARTWORK IS PROPERTY OF PERRICONE MD & MUST BE RETURNED TO: 600 MONTGOMERY ST. STE. 2500 • SAN FRANCISCO, CA 94111 • 201-232-6529	
PRODUCT LINE: Cold Plasma Plus+	START DATE: 05/29/19
PRODUCT: Cold Plasma Plus+ Hand Therapy 2oz FC	DUE DATE: 07/01/19
PART #: 651268	SHIP TO TRADE (STT): N/A
UPC: 651473709510	FORMAT SIZE: 8W1222C1a
SKU #: 63510001	SUBSTRATE: SBS Folding Carton
FILE NAME: 651268_CPPP_HandTherapy_2oz_Tube_FC_Lannister	

PRINTING INSTRUCTIONS & LAYERS:	
* DO NOT MATCH PRINTED MATERIAL TO THE COLORS OF THIS ELECTRONIC DOCUMENT. THEY ARE FOR LAYOUT PURPOSES ONLY.	
Custom Bone (Copy)	Custom Bone, similar to PMS 9043 C. Please use LAB values: L 87.81, A -0.76 / B 6.93
PMS Black C	100%: Exterior and Interior Flood 80%: Front Mortar & Pestle
Anti-Scuff Matte Lamination	
Spot Gloss	

INCI LISTING				
* INDICATE THE R&D NUMBER, BULK CODE % DESCRIPTION FOR THE PRODUCT OR MULTIPLE PRODUCTS.				
ENG/FORMULA #	MASS/BULK CODE	DESCRIPTION	WIP IRC #	WIP UPC #
N/A	N/A	Cold Plasma Plus+ Hand Therapy 2oz	N/A	N/A

HISTORY			
* CREATIVE PLEASE DATE, INITIAL AND DESCRIBE CHANGES TO THE MECHANICAL.			
DATE	INITIAL	REVISION #	DESCRIPTION
05/29/19	CNB	1	Mechanical created
06/11/19	CNB	2	Revisions per mark ups
06/14/19	CNB	3	Revisions per mark ups
06/24/19	CNB	4	Revisions per mark ups
06/27/19	CNB	5	Revisions per mark ups

FINAL APPROVED MECHANICAL AS OF 07.01.19



Lot Code area

UPC: 651473709510

****Gloss & Matte Lamination in Hidden Layers****

Perricone MD	
ARTWORK IS PROPERTY OF PERRICONE MD & MUST BE RETURNED TO: 600 MONTGOMERY ST. STE. 2500 • SAN FRANCISCO, CA 94111 • 201-232-6529	
PRODUCT LINE: Cold Plasma Plus+	START DATE: 05/29/19
PRODUCT: Cold Plasma Plus+ Hand Therapy 2oz FC	DUE DATE: 07/01/19
PART #: 651268	SHIP TO TRADE (STT): N/A
UPC: 651473709510	FORMAT SIZE: 8W1222C1a
SKU #: 53510001	SUBSTRATE: SBS Folding Carton
FILE NAME: 651268_CPPP_HandTherapy_2oz_Tube_FC_Lannister	

PRINTING INSTRUCTIONS & LAYERS:	
* DO NOT MATCH PRINTED MATERIAL TO THE COLORS OF THIS ELECTRONIC DOCUMENT. THEY ARE FOR LAYOUT PURPOSES ONLY.	
Custom Bone (Copy)	Custom Bone, similar to PMS 9043 C. Please use LAB values: L 87.81, A -0.76 / B 6.93
PMS Black C	100%: Exterior and Interior Flood 80%: Front Mortar & Pestle
Anti-Scuff Matte Lamination	
Spot Gloss	

INCI LISTING				
* INDICATE THE R&D NUMBER, BULK CODE % DESCRIPTION FOR THE PRODUCT OR MULTIPLE PRODUCTS.				
ENG/FORMULA #	MASS/BULK CODE	DESCRIPTION	WIP IRC #	WIP UPC #
N/A	N/A	Cold Plasma Plus+ Hand Therapy 2oz	N/A	N/A

HISTORY			
* CREATIVE PLEASE DATE, INITIAL AND DESCRIBE CHANGES TO THE MECHANICAL.			
DATE	INITIAL	REVISION #	DESCRIPTION
05/29/19	CNB	1	Mechanical created
06/11/19	CNB	2	Revisions per mark ups
06/14/19	CNB	3	Revisions per mark ups
06/24/19	CNB	4	Revisions per mark ups
06/27/19	CNB	5	Revisions per mark ups

FINAL APPROVED MECHANICAL AS OF 07.01.19



Perricone
Nuropeptide Facial Cream
17S0213A6
60.325 x 31.750 x 165.894
2+3/8 x 1+1/4 x 6+17/32
.018 SBS
05/29/2019
13+5/16 x 10+17/32
printed