



### Cold Plasma Plus+ Sub-D/Neck

Promotes the most visible signs of a youthful-looking neck & a firm, sculpted jawline

Il favorise les signes les plus visibles d'un cou d'apparence jeune et d'une mâchoire ferme et sculptée

PLUS+  
PLUS+

## Perricone MD

### Cold Plasma Plus+ Sub-D/Neck

Neck Treatment / Soins Pour Le Cou

DMAE, Peptides, Encapsulated Caffeine

e 59 mL / 2 fl oz

#### KEY INGREDIENTS

**DMAE: Intensive Firming** Naturally produced in the human brain, DMAE helps visibly lift sagging skin over time. Easily & quickly absorbed, it visibly plumps skin to help support skin's surface & protect against drying environmental aggressors.

**Peptides: Fortifying Damaged Skin** A chain of amino acids, peptides visibly improve skin thickness & firmness by supporting the building blocks of healthy, youthful-looking skin. Topical application can help improve the appearance of damage caused by collagen breakdown, including wrinkles & sagging.

**Encapsulated Caffeine: Skin Firming & Tightening** A natural, antioxidant-rich stimulant found in over sixty plants, caffeine promotes visibly firmer, tighter & smoother skin by energizing skin's surface. Encapsulation allows for a controlled release to improve efficacy.

Dist. By: NV Perricone LLC, San Francisco, CA 94111. Made in USA of foreign and domestic components / Fabriqué aux Etats-Unis avec des composants nationaux et étrangers. Dist. By: NV Perricone MD Cosmeceuticals UK LTD London, W1T 3LN UK 651130

perriconemd.com  
1 888 823 7837



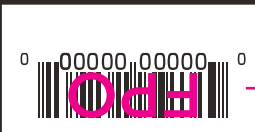
This multi-tasking powerhouse visibly sculpts, firms, tightens & contours the jawline & neck areas. Targets & improves the appearance of lines, wrinkles, uneven texture, sagging & crepiness, while smoothing skin & improving elasticity.

Ce produit puissant multitâche sculpte, raffermi, resserre, tonifie et remodele visiblement les zones du cou et de la mâchoire. Il cible et améliore l'apparence des rides, ridules, texture irrégulière, relâchement et crépage, tout en lissant et en améliorant l'élasticité de la peau.

#### APPLICATION

Apply generously to cleansed neck & jawline area. **WARNING:** This product contains an alpha hydroxy acid (AHA) that may increase your skin's sensitivity to the sun. Prior to sun exposure, cover areas where AHAs have been applied with sunscreen. Contact of the product with the skin must be of limited frequency or duration. Use only as directed. Avoid eye contact. If irritation persists, discontinue use & consult a physician.

Appliquez généreusement sur la zone nettoyée du cou et de la mâchoire. **ATTENTION:** Ce produit contient un acide alpha-hydroxylé (AHA) susceptible d'augmenter la sensibilité de votre peau au soleil. Avant l'exposition au soleil, couvrez les zones où les AHA ont été appliquées avec un écran solaire. Le contact du produit avec la peau doit être de fréquence ou de durée limitée. Utilisez uniquement comme indiqué. Évitez tout contact avec les yeux. Si l'irritation persiste, cessez l'utilisation et consultez un médecin.



UPC: 651473706816

INGREDIENTS  
Water/Aqua/Eau, Hydrogenated Polyisobutene, Isomonyl Isnonano-  
ate, Glycerin, Propylene Glycol, Acetyl L-Carnitine HCL, Dimethyl MEA, Cetearyl  
Alcohol, Miconazole, Lobes Ethers, Hydrogenated Vegetable Glycerides,  
Dimethicone, Glycolic Acid, PEG-100 Stearate, Glyceryl Stearate, Phos-  
phatidylcholine, Tetrahexyldecyl Ascorbate, Panthoyl Tripeptide-5, Xanthan  
Gum, Ethium Panthothenum Seed Oil, Acetyl Tyrosine, Squalane, Phytic  
Acid, Erythrulose, Hexanole Amine, Arnica Seed Oil, Tocopherol, Lecithin, Zinc  
Gluconate, Magnesium Aspartate, Glycine Soja  
(Soybean) Oil, Caffeine, Tetradecyl Aminobutyrylaminobutyric Urea  
(Trifluoroacetate, Sodium Hyaluronate, Panthoyl Carnitine, Copper Gly-  
cinate, Spermines Olfactin (Glycerin) Salt Extract, Squalene,  
Dipalmito ETD, Hydroxyethyl Acrylate/Sodium Acrylate Copolymer, Poly-  
copolymer, Cetearyl Glucoside, Stereolum Gum, Caprylic Glycol, Poly-  
sorbate 60, Phenoxylethanol, Potassium Sorbate, Fragrance/Parfum,  
Silsica, Titanium Dioxide (CI 77891), Iron Oxides (CI 77491), Sodium Benzo-  
ate, Sodium Metabisulfite, Benzyl Benzoate, Limonene

Neck Treatment / Soins Pour Le Cou / Halspflege /  
Trattamento Collo / Tratamiento de Cuello

#### INGRÉDIENTS CLÉS

**DMAE: Raffermissment Intensif** Naturellement produit par le cerveau humain, DMAE aide visiblement à relâcher la peau affaissée au fil du temps. Facilement et rapidement absorbé, il repulpe la peau visiblement pour aider à supporter sa structure superficielle et protège contre le dessèchement provoqué par les agresseurs environnementaux.

**Peptides: Fortifiant La Peau Endommagée** Une chaîne d'acides aminés, les peptides améliorent visiblement l'épaisseur de la peau et sa fermeté en soutenant les composantes d'une peau saine et d'apparence jeune. L'application topique peut contribuer à l'amélioration de l'apparence des dommages causés par la dégradation du collagène, y compris les rides et l'affaissement.

**Caféine Encapsulée: Raffermissment et Tonification de La Peau** Stimulant naturel, riche en antioxydants, présent dans plus de soixante plantes, la caféine favorise une peau visiblement plus ferme, plus ferme et plus lisse en dynamisant la surface de la peau. L'encapsulation permet une libération contrôlée pour améliorer l'efficacité.

**\*\*Gloss & Overall Matte Finish in Hidden Layers\*\***

## Perricone MD

ARTWORK IS PROPERTY OF PERRICONE MD & MUST BE RETURNED TO: 600 MONTGOMERY ST. | STE. 2500 • SAN FRANCISCO, CA 94111 • 201-232-6529

PRODUCT LINE: Cold Plasma Plus+	START DATE: 06/17/19
PRODUCT: Cold Plasma Plus+ Sub-D 2oz Jar FC	DUE DATE: N/A
PART #: 651130	SHIP TO TRADE (STT): N/A
UPC: 651473706816	FORMAT SIZE: 17S0905E4A
SKU #: 53450011	SUBSTRATE: SBS Folding Carton
FILE NAME: 651130_CPPP_SubD_2oz_Jar_FC_GL	

#### PRINTING INSTRUCTIONS & LAYERS:

DO NOT MATCH PRINTED MATERIAL TO THE COLORS OF THIS ELECTRONIC DOCUMENT. THEY ARE FOR LAYOUT PURPOSES ONLY.

<b>Custom Bone (Copy)</b>	Custom Bone, similar to PMS 9043 C. Please use LAB values: L 87.81, A -0.76 / B 6.93
<b>PMS Black C</b>	100%: Exterior and Interior Flood 80%: Front Mortar & Pestle

Overall  
Matte

Spot Gloss

#### INCI LISTING

INDICATE THE R&D NUMBER, BULK CODE, % DESCRIPTION FOR THE PRODUCT OR MULTIPLE PRODUCTS.

ENG/FORMULA #	MASS/BULK CODE	DESCRIPTION	WIP IRC #	WIP UPC #
N/A	N/A	Cold Plasma Plus+ Sub-D 2oz	N/A	N/A

#### HISTORY

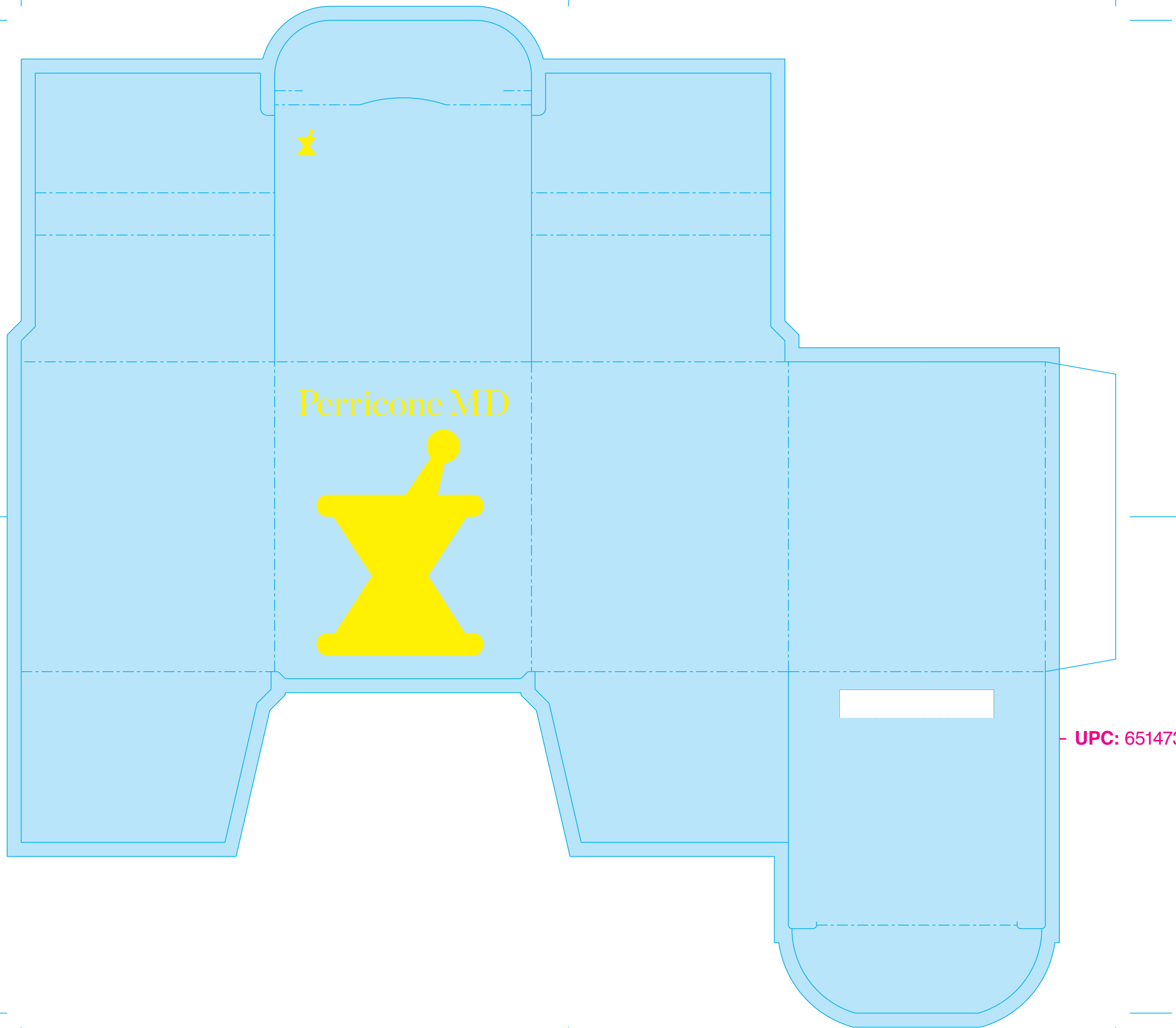
CREATIVE PLEASE DATE, INITIAL AND DESCRIBE CHANGES TO THE MECHANICAL.

DATE	INITIAL	REVISION #	DESCRIPTION
06/17/19	CNB	1	Mechanical created
06/24/19	CNB	2	Revisions per mark ups
06/26/19	CNB	3	Revisions per mark ups
06/28/19	CNB	4	Revised name
07/16/19	AC	5	Revised per mark ups
07/19/19	AC	6	Revised per mark ups
07/31/19	AC	7	Fixed ingredients overlapping the UPC
08/13/19	AC	8	Revised final copy & translation on the top panel
08/15/19	AC	9	Revised per mark-ups

**FINAL APPROVED MECHANICAL AS OF 07.31.19**  
**RE-RELEASE MECHANICAL AS OF 08.16.19**



Perricone  
NP Facial 2oz Jar  
17S0905E4A  
57.944 x 57.944 x 69.850  
2+9/32 x 2+9/32 x 2+3/4  
.018 SBS  
10/31/2017  
9+23/32 x 8+13/16  
printed



**\*\*Gloss & Overall Matte Finish in Hidden Layers\*\***

Perricone MD	
ARTWORK IS PROPERTY OF PERRICONE MD & MUST BE RETURNED TO: 600 MONTGOMERY ST.   STE. 2500 • SAN FRANCISCO, CA 94111 • 201-232-6529	
PRODUCT LINE: Cold Plasma Plus+	START DATE: 06/17/19
PRODUCT: Cold Plasma Plus+ Sub-D 2oz Jar FC	DUE DATE: N/A
PART #: 651130	SHIP TO TRADE (STT): N/A
UPC: 651473706816	FORMAT SIZE: 17S0905E4A
SKU #: 53450011	SUBSTRATE: SBS Folding Carton
FILE NAME: 651130_CPPP_SubD_2oz_Jar_FC_GL	

PRINTING INSTRUCTIONS & LAYERS:	
• DO NOT MATCH PRINTED MATERIAL TO THE COLORS OF THIS ELECTRONIC DOCUMENT. THEY ARE FOR LAYOUT PURPOSES ONLY.	
<b>Custom Bone (Copy)</b>	Custom Bone, similar to PMS 9043 C. Please use LAB values: L 87.81, A -0.76 / B 6.93
<b>PMS Black C</b>	100%: Exterior and Interior Flood 80%: Front Mortar & Pestle
<b>Overall Matte</b>	
<b>Spot Gloss</b>	

INCI LISTING				
• INDICATE THE R&D NUMBER, BULK CODE % DESCRIPTION FOR THE PRODUCT OR MULTIPLE PRODUCTS.				
ENG/FORMULA #	MASS/BULK CODE	DESCRIPTION	WIP IRC #	WIP UPC #
N/A	N/A	Cold Plasma Plus+ Sub-D 2oz	N/A	N/A

HISTORY			
• CREATIVE PLEASE DATE, INITIAL AND DESCRIBE CHANGES TO THE MECHANICAL.			
DATE	INITIAL	REVISION #	DESCRIPTION
06/17/19	CNB	1	Mechanical created
06/24/19	CNB	2	Revisions per mark ups
06/26/19	CNB	3	Revisions per mark ups
06/28/19	CNB	4	Revised name
07/16/19	AC	5	Revised per mark ups
07/19/19	AC	6	Revised per mark ups
07/31/19	AC	7	Fixed ingredients overlapping the UPC
08/13/19	AC	8	Revised final copy & translation on the top panel
08/15/19	AC	9	Revised per mark-ups

**FINAL APPROVED MECHANICAL AS OF 07.31.19**  
**RE-RELEASE MECHANICAL AS OF 08.16.19**