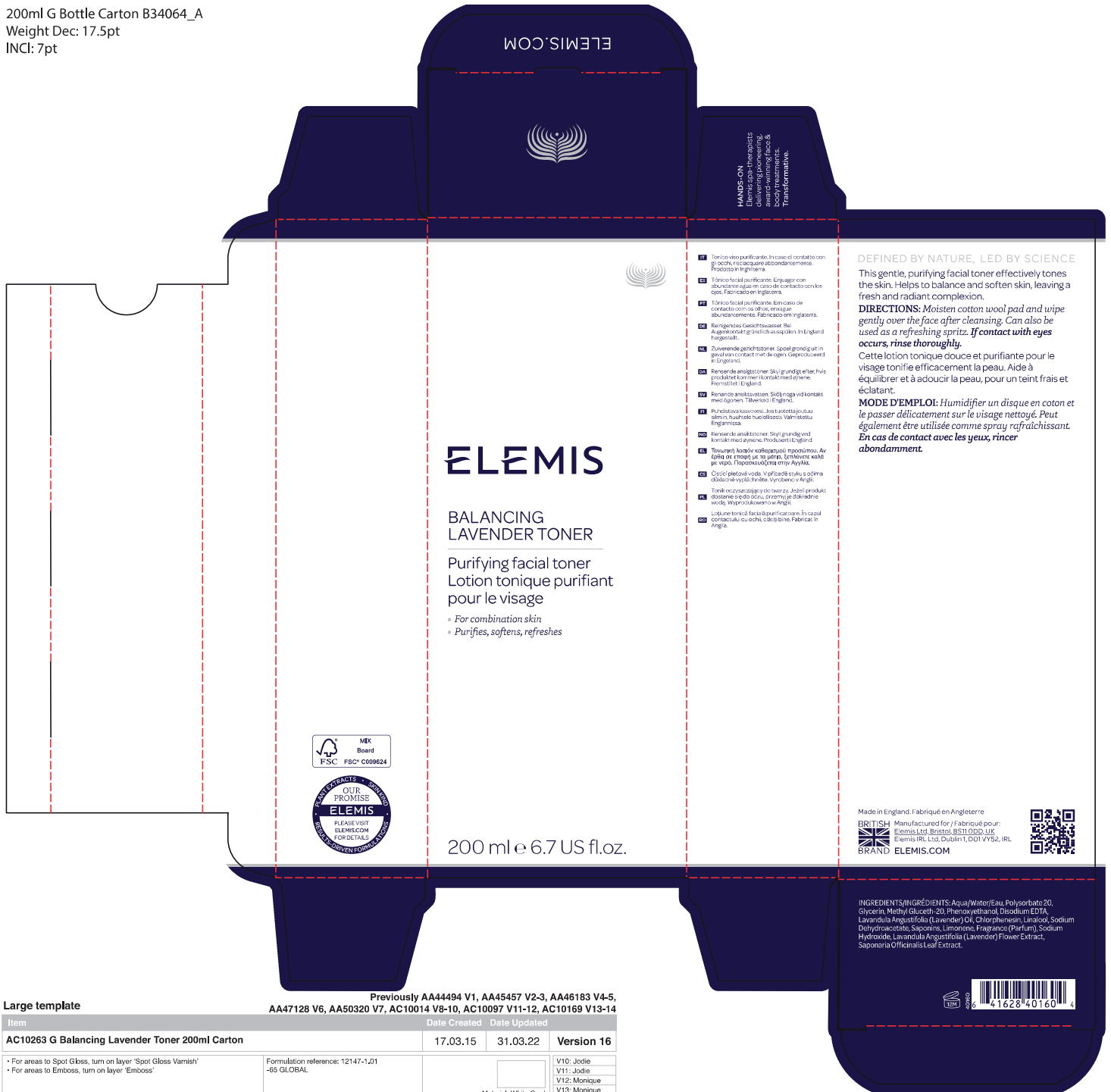
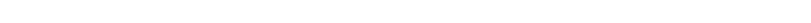


200ml G Bottle Carton B34064_A
 Weight Dec: 17.5pt
 INCI: 7pt



Previously AA44494 V1, AA45457 V2-3, AA46183 V4-5, AA47128 V6, AA50320 V7, AC10014 V8-10, AC10097 V11-12, AC10169 V13-14

Item	Date Created	Date Updated	Version
AC10263 G Balancing Lavender Toner 200ml Carton	17.03.15	31.03.22	Version 16
<p>* For areas to Spot Gloss, turn on layer 'Spot Gloss Varnish' * For areas to Emboss, turn on layer 'Emboss'</p> <p>Formulation reference: 12147-1,01 -05 GLOBAL</p> <p>Material: White Card</p> <p>230514B Silver Foil</p> <p>Spot Gloss Varnish Emboss</p>			
<p>V10: Jodie V11: Jodie V12: Monique V13: Monique V14: Monique V15: Monique V16: Monique V17: V18:</p>			



DEFINED BY NATURE, LED BY SCIENCE

This gentle, purifying facial toner effectively tones the skin. Helps to balance and soften skin, leaving a fresh and radiant complexion.

DIRECTIONS: Moisten cotton wool pad and wipe gently over the face after cleansing. Can also be used as a refreshing spritz. *If contact with eyes occurs, rinse thoroughly.*

Cette lotion tonique douce et purifiante pour le visage tonifie efficacement la peau. Aide à équilibrer et à adoucir la peau, pour un teint frais et éclatant.

MODE D'EMPLOI: Humidifier un disque en coton et le passer délicatement sur le visage nettoyé. Peut également être utilisée comme spray rafraîchissant. *En cas de contact avec les yeux, rincer abondamment.*

Made in England. Fabriqué en Angleterre

BRITISH Manufactured for / Fabriqué pour:
 ELEMIS Ltd, Bristol, BS11 0DD, UK
 ELEMIS IRL Ltd, Dublin 1, D01 VY52, IRL

BRAND ELEMIS.COM

INGREDIENTS/INGRÉDIENTS: Aqua/Water/Eau, Polysorbate 20, Glycerin, Methyl Gluceth-20, Phenoxyethanol, Disodium EDTA, Lavandula Angustifolia (Lavender) Oil, Chlorphenesin, Limonool, Sodium Dehydroacetate, Saponins, Limonene, Fragrance (Parfum), Sodium Hydroxide, Lavandula Angustifolia (Lavender) Flower Extract, Saponaria Officialis Leaf Extract.

